



# 2021-22 School Planning

Special Board Meeting  
Health and Safety Plans

# Health Guidance Agencies



1

Centers for  
Disease  
Control (CDC)



2

California  
Department of  
Public Health  
(CDPH)



3

San Diego  
Human Health  
Services Agency  
(SDHHSA)





# CDPH - Foundational Principle

**The foundational principle of this guidance is that all students must have access to safe and full in-person instruction and to as much instructional time as possible.** In California, the surest path to safe and full in-person instruction at the outset of the school year, as well as minimizing missed school days in an ongoing basis, is a strong emphasis on the following:

- Vaccination for all eligible individuals to get COVID-19 rates down throughout the community;
- Universal masking in schools, which enables no minimum physical distancing, allowing all students access to full in-person learning, and more targeted quarantine practices, keeping students in school; and,
- access to a robust COVID-19 testing program as an available additional safety layer.



# CDPH - Masks

- Masks are one of the most effective and simplest safety mitigation layers to prevent in-school transmission of COVID-19 infections and to support full-time in-person instruction in K-12 schools.
- SARS-CoV-2, the virus that causes COVID-19, is transmitted primarily by aerosols (airborne transmission), and less frequently by droplets.
- Physical distancing is generally used to reduce only droplet transmission, whereas masks are one of the most effective measures for source control of **both** aerosols and droplets.
- Therefore, masks best promote both safety and in-person learning by reducing the need for physical distancing. Additionally, under the new guidance from the CDC, universal masking also permits modified quarantine practices under certain conditions in K-12 settings, further promoting more instructional time for students.
- Universal masking indoors in K-12 schools is recommended by the [American Academy of Pediatrics](#) and by the [CDC](#) in their Guidance for COVID-19 Prevention in K-12 schools (updated July 27, 2021)
- **CDPH will continue to assess conditions on an ongoing basis, and will determine no later than November 1, 2021, whether to update mask requirements or recommendations.**



# Delta Variant has Rewritten the Book on COVID

Dr. Bradley and Dr. Pong, Rady's Children's Hospital (August 9, 2021)

- Masks will prevent the spread of Delta infection in schools
- Masks will protect children not harm them (AAP, CDC, CDPH)

Dr. Francis Collins, Director of the National Institutes of Health (NIH)

- The NIH director also weighed in on the heated fight in states requiring children to wear masks in schools. Collins said, "He's "puzzled" by the debate, saying there is ample evidence that wearing masks will help prevent COVID-19 outbreaks."
- Ultimately, masking will help keep schools open
- "If you want to avoid having that outbreak that's going to send all the kids home again, you should be doing everything to avoid that. And that means wearing masks."



# CDPH - Ventilation

For indoor spaces, ventilation should be optimized.

- Bring in as much outdoor air as possible
- Ensure Heating, Ventilation, and Air Conditioning (HVAC) settings are maximizing ventilation
- Filter and/or clean the air in your school or childcare program
  - Ventilation system filters should be MERV-rated at MERV 13 or better
  - Consider portable air cleaners that use [high-efficiency particulate air \(HEPA\)](#) filters to enhance air cleaning wherever possible, especially in higher-risk areas such as a nurse's office or sick/isolation room
  - Consider using Ultraviolet Germicidal Irradiation (UVGI) in schools and non-home-based childcare programs as a supplemental treatment to inactivate the virus that causes COVID-19, especially if options for increasing ventilation and filtration are limited. Consult a qualified professional to help design and install any Ultraviolet Germicidal Irradiation Systems.



# Ventilation

## Portable Air Purifiers Using HEPA Filters

- \$1300 - \$1600 each
- \$200 annual service fee each
- Minimum of 161 classrooms
- For rooms up to 1,100 square feet (classrooms)

### Estimated Costs -

- HEPA Units = \$300,000 (ESSER Funds)
- Annual Maintenance = \$33,600 (Deferred Maintenance/General Fund)

## Cold Plasma Technology

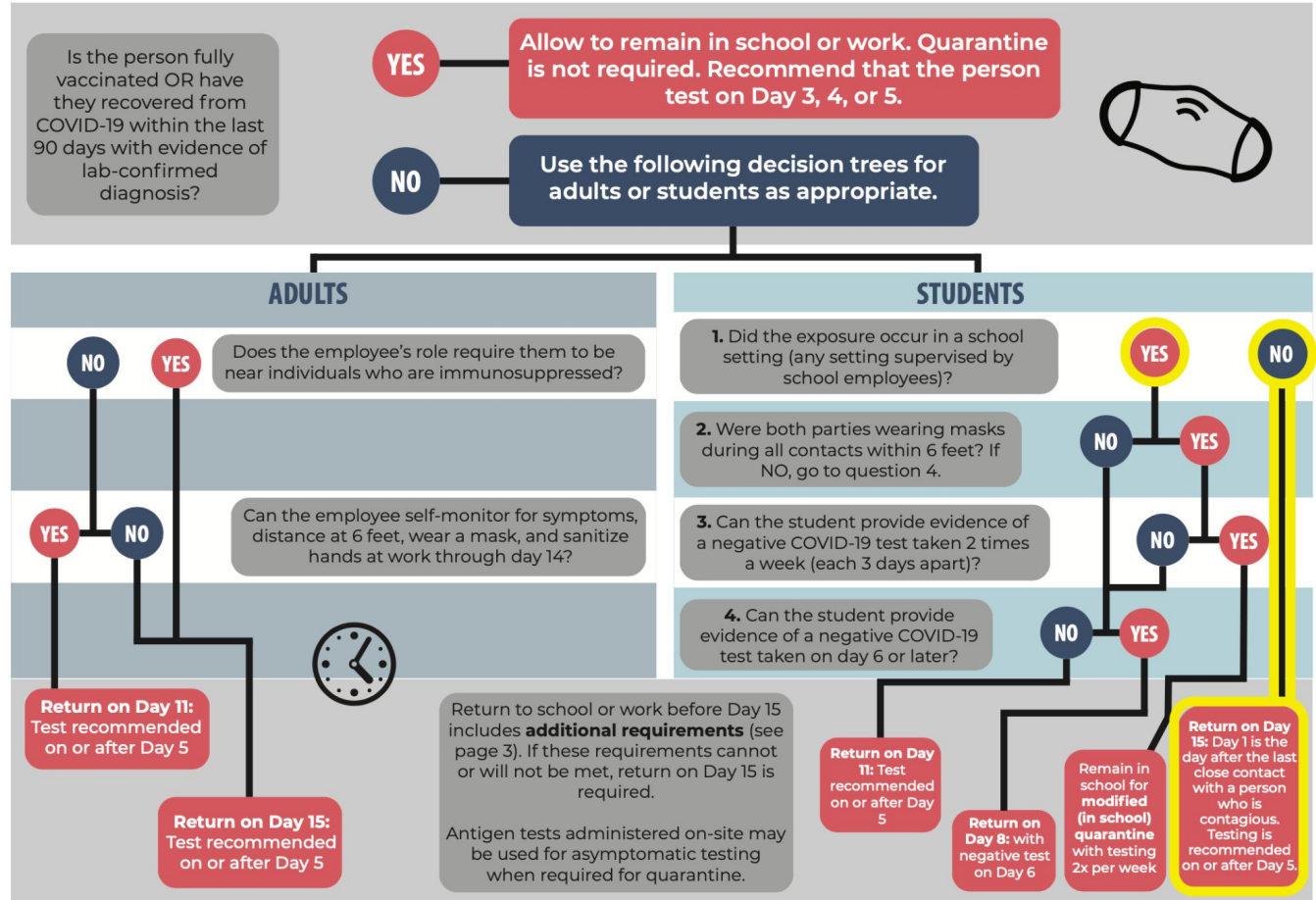
- \$1000 - \$1200 each
- Placed inside current ducting, kills up to 99.9% of airborne pathogens

### Estimated Costs

- \$300,000 (ESSER Funds)
- No annual maintenance costs

# Close Contact and Quarantine Tree

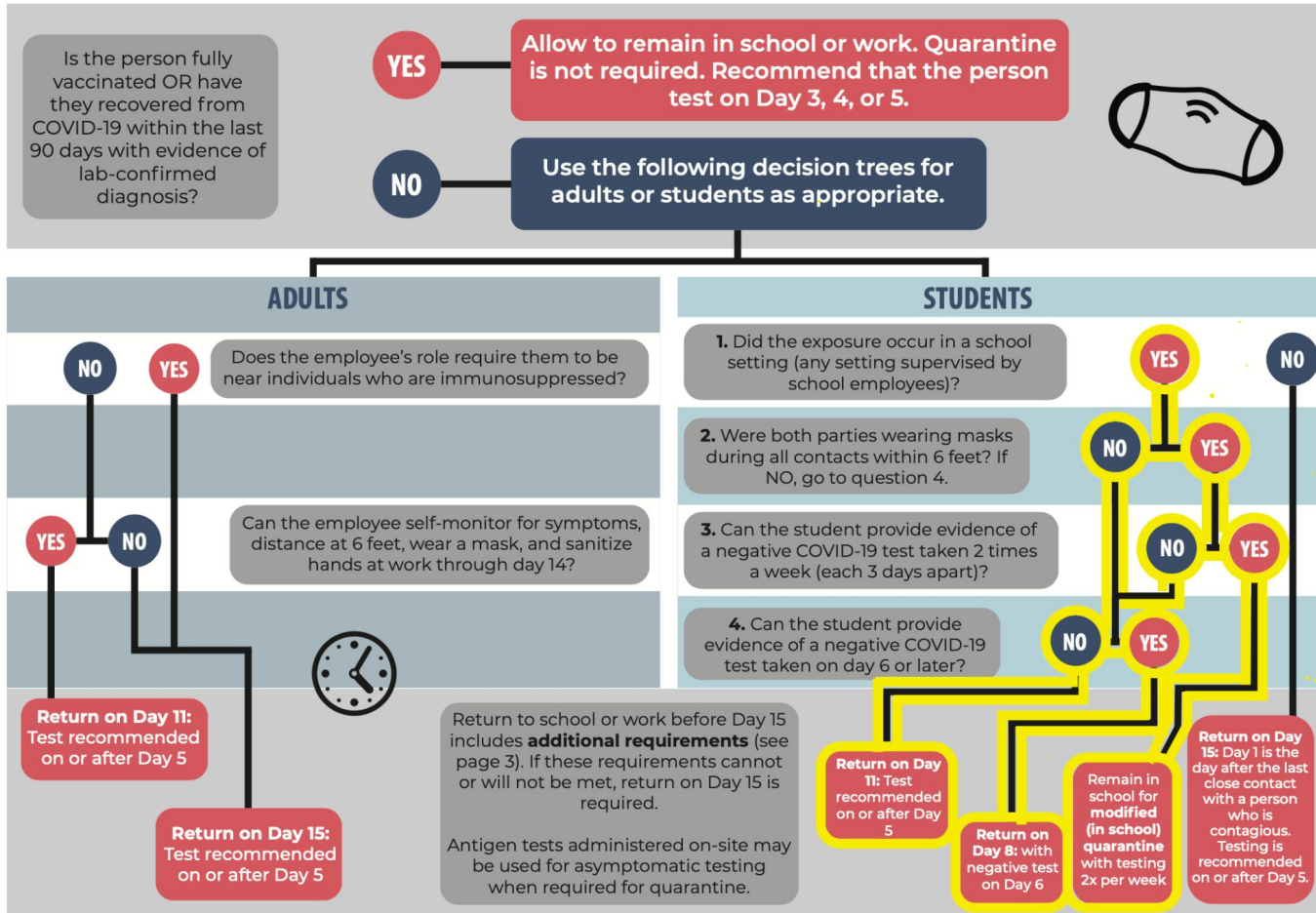
## Direct Contact Exposure Outside of a School Setting





# Close Contact and Quarantine Tree

## Direct Contact Exposure in a School Setting





# CDPH - Quarantine (Return on Day 8 or Day 11)

Quarantine recommendations for: unvaccinated [close contacts](#) who were not wearing masks or for whom the infected individual was not wearing a mask during the indoor exposure; or unvaccinated students as described in #8 above.

- For these contacts, those who remain asymptomatic, meaning they have NOT had any symptoms, may discontinue self-quarantine under the following conditions:
  - Quarantine can end after Day 10 from the date of last exposure without testing; Or
  - Quarantine can end after Day 7 if a diagnostic specimen is collected after Day 5 from the date of last exposure and tests negative.
- To discontinue quarantine before 14 days following last known exposure, asymptomatic close contacts must:
  - Continue daily self-monitoring for symptoms through Day 14 from last known exposure; AND
  - Follow all recommended non-pharmaceutical interventions (e.g., wearing a mask when around others, hand washing, avoiding crowds) through Day 14 from last known exposure.
- If any symptoms develop during this 14-day period, the exposed person must immediately isolate, get tested and contact their healthcare provider with any questions regarding their care.



# CDPH - Quarantining (Modified)

- Quarantine recommendations for unvaccinated students for exposures when both parties were wearing a mask, as required in **K-12 indoor settings**. These are adapted from the CDC K-12 guidance and CDC definition of a close contact. When both parties were wearing a mask in any school setting in which students are supervised by school staff (**including indoor or outdoor school settings** and school buses, including on buses operated by public and private school systems), unvaccinated students who are close contacts (more than 15 minutes over a 24-hour period within 0-6 feet indoors) may undergo a modified quarantine as follows.
- They may continue to attend school for in-person instruction if they:
  - Are asymptomatic;
  - Continue to appropriately mask, as required;
  - Undergo at least twice weekly testing during the 10-day quarantine; and,
  - Continue to quarantine for all extracurricular activities at school, including sports, and activities within the community setting.



# CDPH - Screening, Testing, and Quarantining

CDPH has a robust State- and Federally-funded school testing program and subject matter experts available to support school decision making, including free testing resources to support screening testing programs (software, test kits, shipping, testing, etc.).

- Quarantine - No Testing Required
  - Return on Day 15
  - Return on Day 11
- Quarantine - Testing Required:
  - Return on Day 8 (1x on or after Day 6)
  - Modified Quarantine (2x a week within 10-day quarantine period)
- Asymptomatic
- Symptom/Response



# Joint Letter to SDCOE Superintendent

Dr. Taras, Dr. Bradley, Dr. Pong (July 29, 2021)

- Seating Charts

- Knowing which students spent minutes or more within 6' can limit unnecessary quarantines.
- Whether activities occur indoors or outdoors, the information will also help limit the number of students that need to be quarantined (or undergo modified quarantine).



# Masking During School

**Currently CDPH requires indoor masking of students and staff regardless of vaccination status.**

## **Additional Options:**

1. **Required** Indoor and Outdoor Masking
2. **Required** Indoor and **Recommended** Outdoor Masking



# Ventilation

**Existing: Maintain existing MERV 13 with increased outside air**

## **Additional Options:**

1. Purchase HEPA units (portable air purifiers that use HEPA filters)
2. Cold Plasma Technology

# COVID Testing Program



1. **Support Modified Quarantine** - 2x a week over 10-day quarantine period
  - Utilize CDPH-provided BinaxNow Rapid Antigen Tests
2. **Support Return Day 8** - 1x on Day 6 or later
  - Utilize CDPH-provided BinaxNow Rapid Antigen Tests
3. **Suspend Asymptomatic** 1x every 8 to 9 weeks - recommend to focus on Return Day 8 and modified quarantine testing
  - Utilize CDPH-provided BinaxNow Rapid Antigen Tests





# Board Discussion